

Data Sheet - MRP Workbench

The EFACS MRP Workbench provides a single, central area to manage the entire MRP process, including all functional areas and reports.

Material Requirements Planning (MRP) is a production planning and scheduling system used to aid the manufacturing process.

A computerised MRP system supports manufacturing companies with these three key objectives:

- Ensure materials are available for production, and end products are available for customers.
- Maintain the lowest achievable material and product levels in stock.
- Plan your manufacturing activities, purchasing and delivery schedules.

Why should your business use MRP?

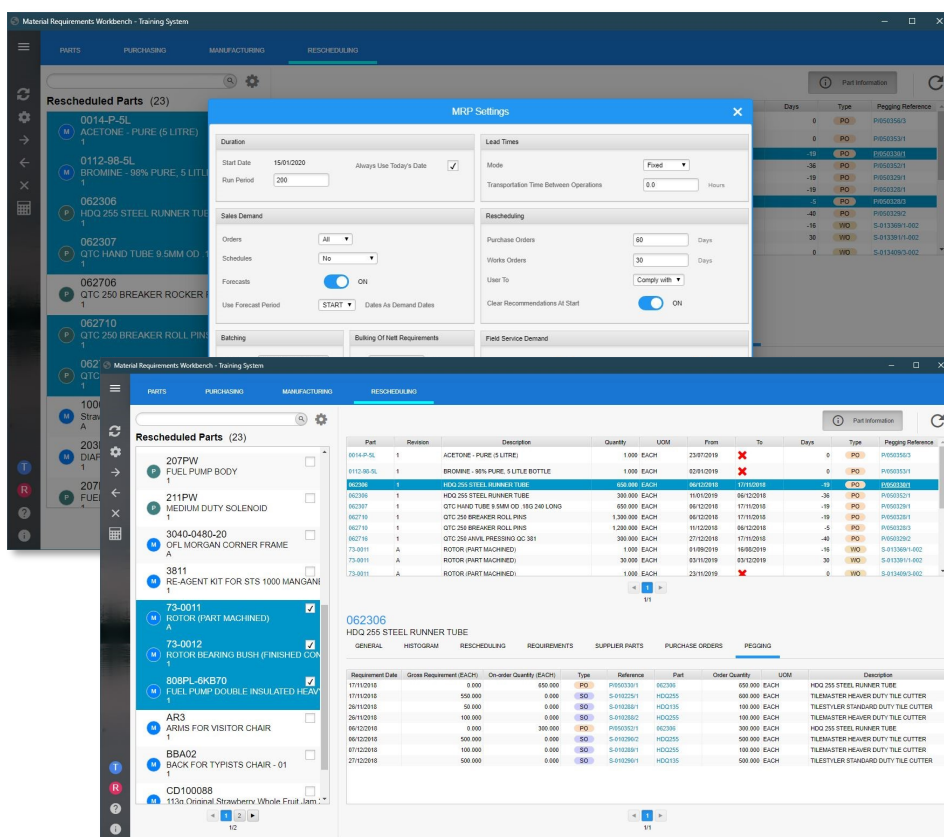
If people within your business are asking the following questions, then you should consider using MRP to help you manage your manufacturing processes:

- What do we need to buy?
- How much do we need to buy?
- When do we need it by?

An MRP system helps to balance supply with demand. A well implemented MRP system will improve productivity, decrease inventory, improve estimated delivery date accuracy and increase profitability.

EFACS MRP

EFACS has included MRP functionality for over 30 years and



The screenshot displays the 'Material Requirements Workbench - Training System' interface. It features a navigation menu on the left with options like 'PARTS', 'PURCHASING', 'MANUFACTURING', and 'RESCHEDULING'. The main area is divided into several panels:

- Rescheduled Parts (23):** A list of parts including '0014-P-5L ACETONE - PURE (5 LITRE)', '0112-98-5L BROMINE - 98% PURE, 5 LITL', '062306 HDQ 255 STEEL RUNNER TUBE', '062307 QTC 250 HAND TUBE 9.5MM OD', '062706 QTC 250 BREAKER ROCKER', '062710 QTC 250 BREAKER ROLL PIN', '062711 QTC 250 BREAKER ROLL PIN', '1000 STR A', '203 DIAP', '207 FUE', '207PW FUEL PUMP BODY', '211PW MEDIUM DUTY SOLENOID', '3040-0480-20 ORL MORGAN CORNER FRAME', '3811 RE-AGENT KIT FOR STS 1000 MANGANE', '73-0011 ROTOR (PART MACHINED)', '73-0012 ROTOR BEARING BUSH (FINISHED CON', '808PL-6KB70 FUEL PUMP DOUBLE INSULATED HEAV', 'AR3 ARMS FOR VISITOR CHAIR', 'BBA02 BACK FOR TYPISTS CHAIR - 01', and 'CD100088 11% Cleaned Strawbery Whole Fruit Jam'.
- MRP Settings:** A configuration window with tabs for 'Duration', 'Lead Times', 'Sales Demand', 'Reordering', and 'Field Service Demand'. It includes fields for 'Start Date', 'Run Period', 'Mode', 'Transportation Time Between Operations', 'Purchase Orders', 'Works Orders', 'Use To', 'Clear Recommendations At Start', and 'Field Service Demand'.
- Rescheduled Parts Table:** A detailed table showing part details such as Part, Revision, Description, Quantity, UOM, From, To, Days, Type, and Popping Reference. It lists various parts like 'ACETONE - PURE (5 LITRE)', 'BROMINE - 98% PURE, 5 LITRE BOTTLE', 'HDQ 255 STEEL RUNNER TUBE', 'QTC 250 HAND TUBE 9.5MM OD', 'QTC 250 BREAKER ROLL PIN', and 'ROTOR (PART MACHINED)'.
- 062306 HDQ 255 STEEL RUNNER TUBE:** A detailed view of a specific part, showing a 'Requirements' table with columns for Requirement Date, Gross Requirement (EACH), On-order Quantity (EACH), Type, Reference, Part, Order Quantity, UOM, and Description. It lists requirements for dates from 11/11/2018 to 27/12/2018.

Exel has a huge amount of experience implementing MRP systems into a wide range of different industries and sizes of company.

The EFACS MRP Workbench

EFACS version 8.6.2 (launched June 2019) sees the inclusion of the new EFACS MRP Workbench.

The EFACS MRP Workbench has been designed to provide an enhanced visual aid to improve the accuracy and efficiency of materials planning. The Workbench also

provides a dynamic way of interacting with data within a single application.

Flexibility

MRP can be run in three distinct modes - purchased parts, manufactured parts and as a single 'holistic' application to provide the functional areas required for both manufactured and purchased parts.

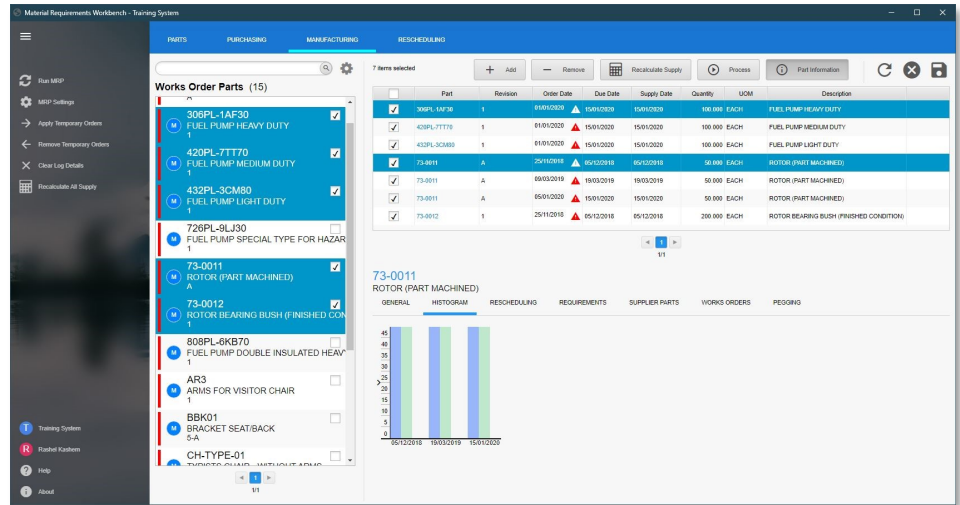
Options are provided to run MRP straight from the applications, however, this can still be run via a schedule.

EFACS E/8

Data Sheet - MRP Workbench

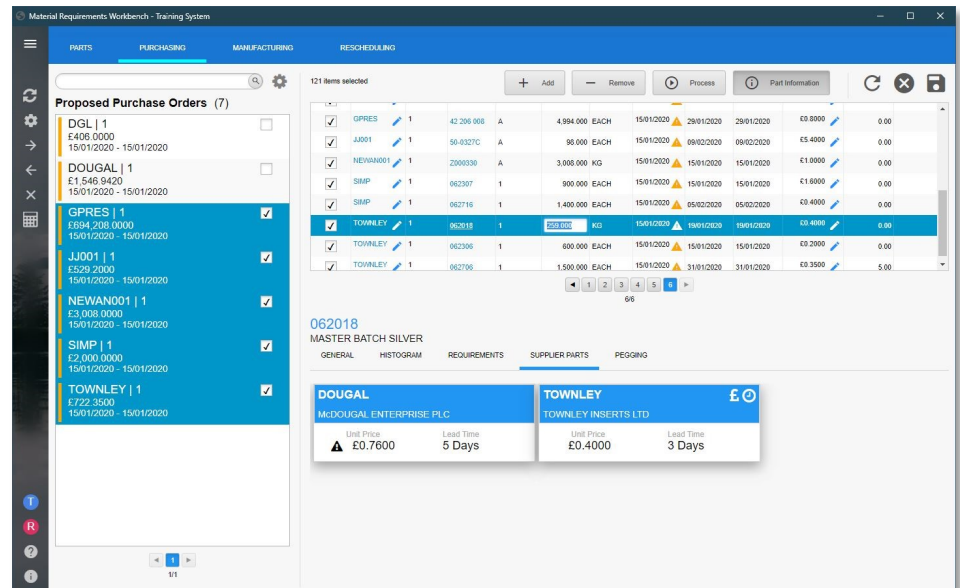
The main MRP Workbench screen will open with a view of all parts and their status. Here you can globally change your supply and demand profiles for required parts. Should you have previously made changes and subsequently wish to revert to the original recommendations from the last MRP run, there is a 'Recalculate all supply' option

You are easily able to over-ride an MRP schedule and can change a previously selected item from a purchased part to a manufactured part, and vice versa, allowing you to mix and match the supply chain at ease.



Features

- Simple to navigate
- Easy to access information
- Complete processes in a single screen
- A graphical representation is provided to view stock profiles.
- A unified search facility allows you to filter by under/over-supply, date mismatch or matched supply.



Follow Exel...



For further information:
Tel: +44 (0)115 946 0101
Email: sales@exel.co.uk

Exel Computer Systems plc
Bothe Hall, Sawley, Long Eaton,
Nottingham, NG10 3XL

